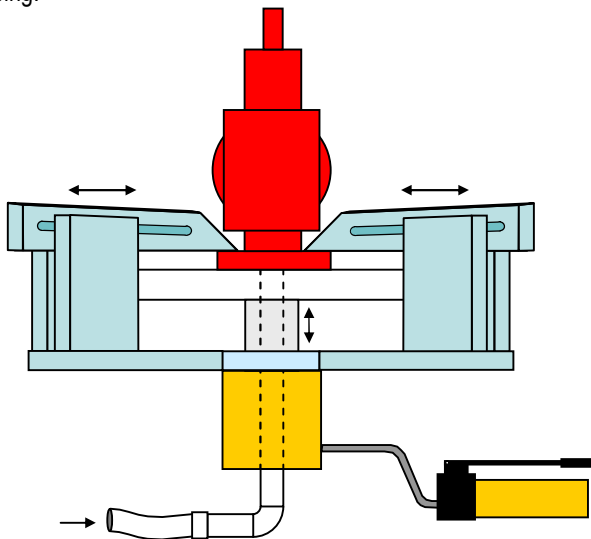


Dunn's PM Valve Tester

When the need is to reach the Valve at the Site portability is the solution.

This portable/mobile design gives the operator the ability of having the shop at site.

The 12Ton hydraulic clamping system allows relief valve, body and seal testing up to 8in valve size. The use of a hollow plunger cylinder allows feed the testing table using a passing thru pipe and giving the table the ability to rise for valve clamping.



Hydraulic power is provided using a manual hydraulic pump integrated with the tester.

Test table supported on the hydraulic hollow plunger cylinder includes a flexible HP hose, connected to table supply pipe, to allow the table to rise for valve clamping.

Main Features

Max clamping Force: 12 Ton hydraulic.

Hydraulic power source: manual pump integrated with the tester.

Clamping arms: four.

Max. Test Pressure:

Liquid: 3,000 psi for sizes ½ in to 2 in. Proportional to diameter for sizes larger than 2in up to 8in.

Air/nitrogen: 3,000 psi for sizes ½ in to 2 in. Proportional to diameter for sizes larger than 2in up to 8in.

Maximum body pressure: air at 90PSI

Seal test: air at 90 psi

Maximum relief valve test: 3,000psi

Pressure supply: external (air/nitrogen, liquid).

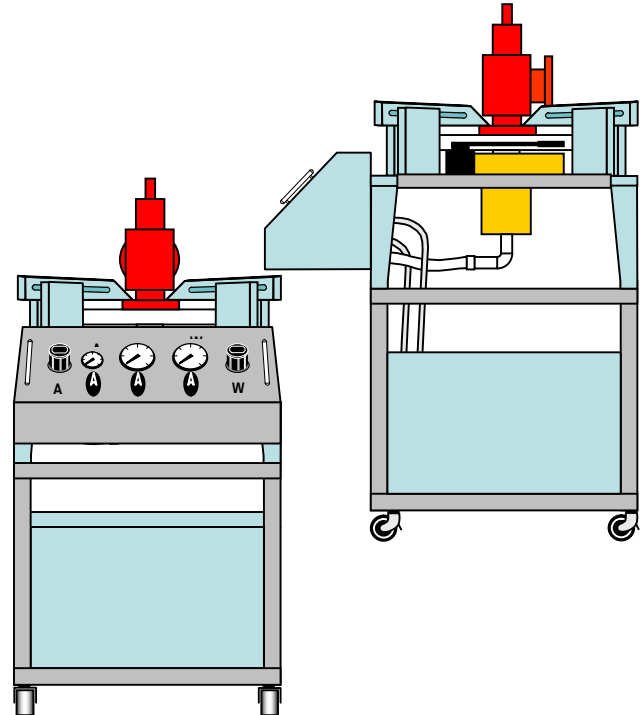
Air supply: 95 psi

Main Sizes: 800mm x 900mm x 1100mm

Weight: 190kg ±5%.

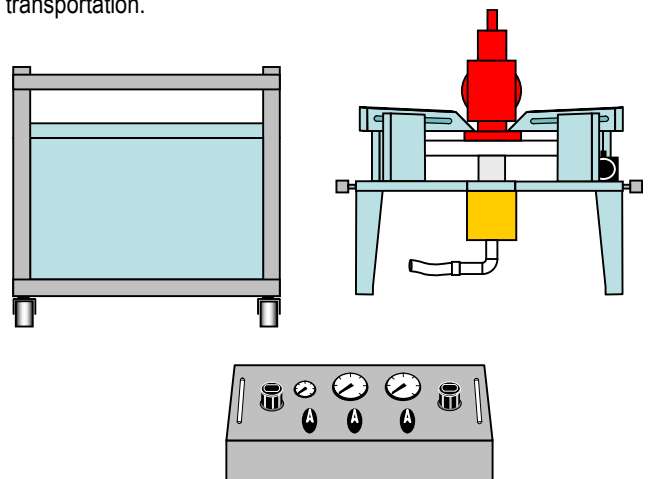
Design meets the requirements of API 527 / API 598.

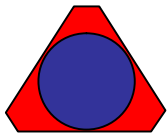
The system is fitted for easy movable feature giving the advantage to have it as close as possible to the working site.



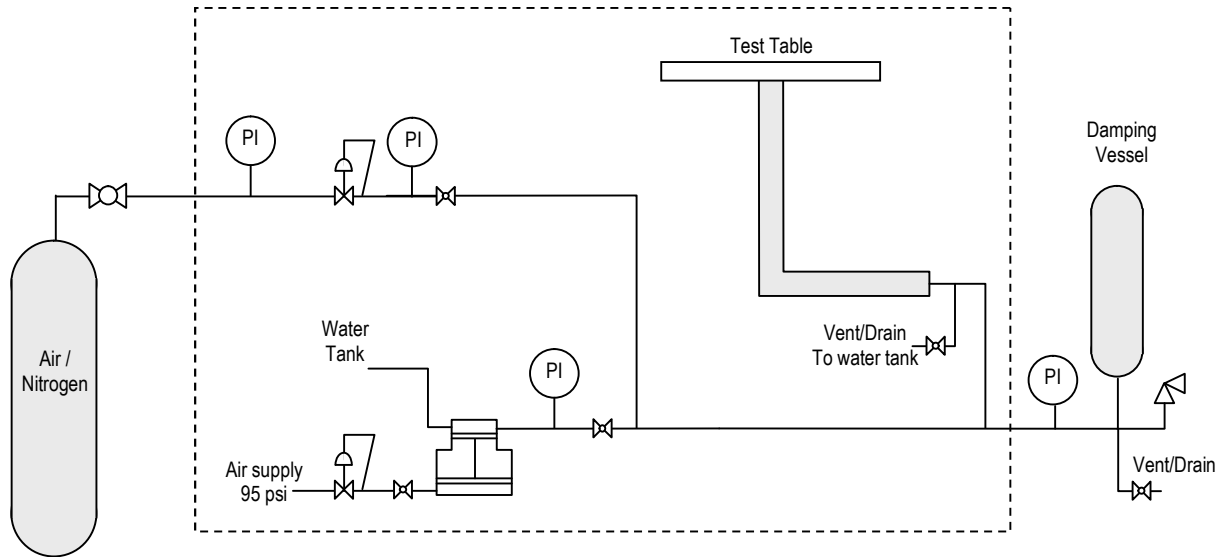
Modular Design

Modular design allows split the tester in three pieces for easy transportation.





Dunn's PM Valve Tester



Main Components

Pressure Gages:

All gages in stainless steel,

- Liquid Test: 100mm Dial, range 0-4000psi, accuracy class 1.0
- Air/Nitrogen test: 100mm Dial, range 0-4000psi, accuracy class 1.0
- External Air/Nitrogen supply: 63mm Dial, range 0-4000psi, accuracy class 1.0

Block Valves

- Air Supply to the System
- Air Pressure to Test Table
- Air Pressure to Water Pump
- Test Table Vent/Drain

Pressure Regulators:

- Air supply to Water Pump
- Air Test, input pressure 5000psi, output pressure 2900psi.

Air Driven Water Pump

Test table supported on the hydraulic hollow plunger cylinder. It includes a flexible HP hose to allow the table to rise for valve clamping.

Clamping System:

- Four Nickel Plated Clamping Arms (sliding type)
- Hydraulic hollow plunger cylinder
- Manual Driven Hydraulic Pump

Water tank, 316SS, 55liter capacity with level indicator..

Pressure Port for Optional Pressure Sensors.

316SS drip pan

Customizing

We meet customer requirements such:

- Pressure test range.
- Paint spec.
- Pressure Gages spec.
- Clamping method.
- External damping vessel.
- Optional LVDT and pressure sensor.
- Optional Data Acquisition System (DAS).
- Threaded Adapters.
- Fittings.
- Drip cup (bubble counter).
- Gaskets.